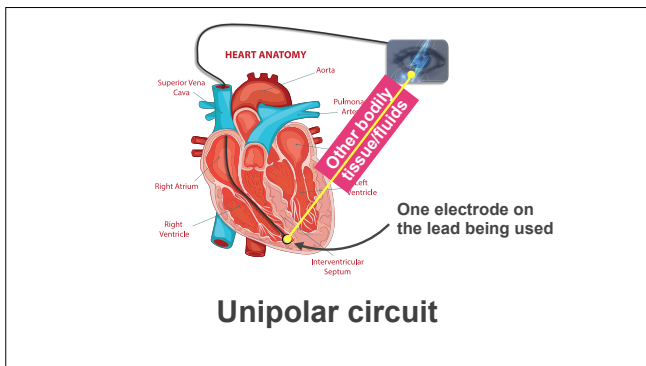


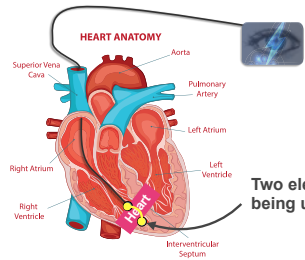


Nuts and bolts of pacing

Unipolar and bipolar (vectors)

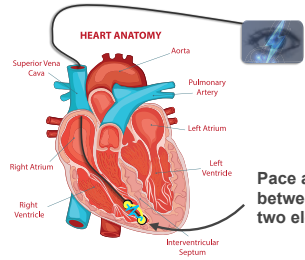






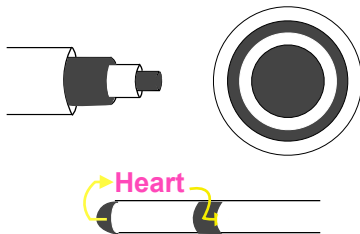
Two electrodes being used

Bipolar circuit

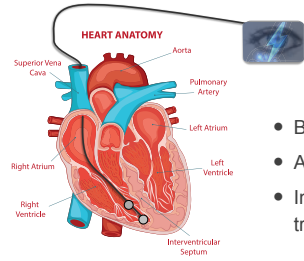


Pace and sense between the two electrodes

Bipolar circuit

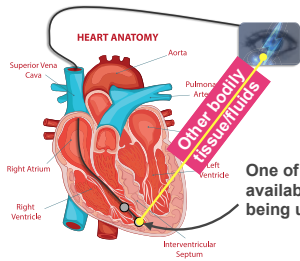


A bipolar lead



- Bipolar first choice
- Artifact
- Interchangeable to trouble shoot

So which is better?



Unipolar in a bipolar lead

Takeaway message



In pacing we **always** require two electrodes. In unipolar pacing the pacemaker itself becomes one of the electrodes.
